

Thank You!

Your Generosity. Our Community.

With our deepest gratitude, we share with you the incredible impact you have on so many in our community when you connect your purpose and passion with our mission. Each gift, whatever the size, contributes to enhancing the patient experience and empowering clinical excellence. We are so thankful for each and every person who makes this commitment through philanthropy. Summa Health has enjoyed significant growth and accomplished a great deal over the past two years – progress achieved with help from you, our donors and trusted partners. You have walked alongside us in a historic way, giving new meaning to the word “unprecedented,” and we are deeply grateful. Thank you!

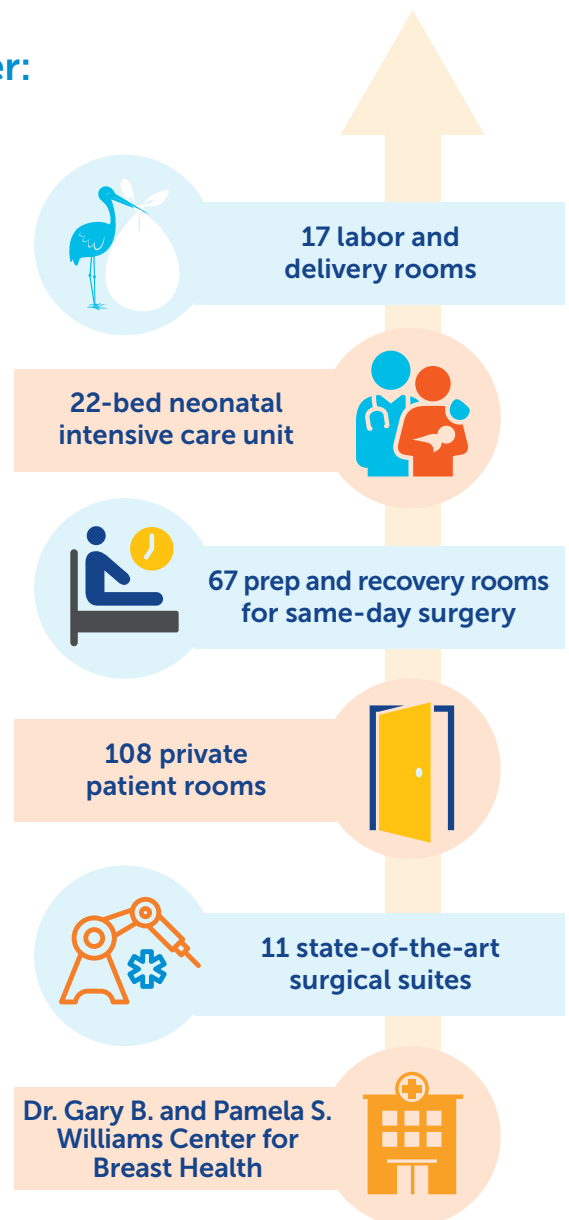
Dr. Gary B. and Pamela S. Williams Tower: You Helped Make It Possible



When the Dr. Gary B. and Pamela S. Williams Tower opened on the Akron Campus in May 2019, the community enthusiastically embraced the enhanced experience it offered. The impact was immediate, with volumes up considerably in the areas of labor, delivery and maternity; surgeries; and inpatient admissions.

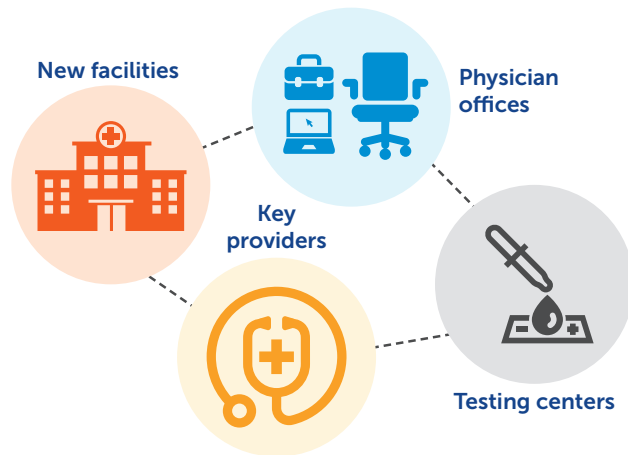
A symbol of our commitment to care for our community now and always, the Williams Tower offers amenities reflective of our mission. Within its 7 stories are 17 labor and delivery rooms, a 22-bed neonatal intensive care unit, 67 prep and recovery rooms for same-day surgery, 108 private patient rooms and 11 state-of-the-art surgical suites that bring the hospital’s total number of operating rooms to 27.

The Dr. Gary B. and Pamela S. Williams Center for Breast Health provides patients access to the highest quality, personalized care for any breast concern — from benign conditions and abnormal mammograms to diagnosis, treatment and survivorship for breast cancer.



Challenges Met: Your Gifts Help in So Many Ways

Facing a direct hit from the COVID-19 pandemic, Summa Health persevered. Your gifts continued to help us meet the ever-changing needs of our system, our industry and, most importantly, our community. Through all this, we maintained our focus on the needs of our patients and families, opening a new outpatient center in Tallmadge, recruiting additional key providers, and adding new access points, physician offices and testing centers throughout the region.

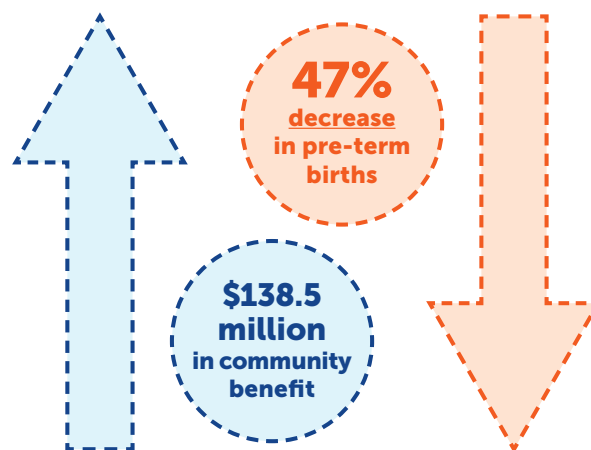


A Boom in Barberton: Your Generosity Helped Provide \$25 Million in Improvements

Renovations to the Summa Health System – Barberton Campus paralleled progress on the Akron Campus over the past couple of years. With an investment of \$25 million, we renovated all surgery units, radiology and interventional cardiology areas, and the main waiting area. As a result, we saw volumes – and patient satisfaction – rise considerably.

Our Community Can Count on You – and Summa Health

Summa Health provided \$138.5 million in community benefit to area residents in 2019. Among our many outreach efforts, our caregivers provided prenatal care to at-risk pregnant women through the CenteringPregnancy® program with the aim to reduce infant mortality in our area. Due in part to our efforts and your support, Akron, which has one of the highest infant mortality rates in the country, saw a 47 percent decrease in pre-term births.



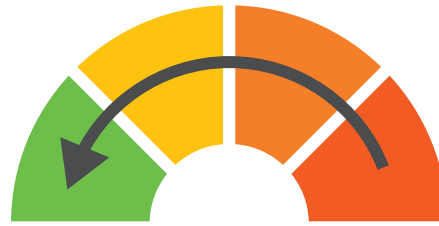
Vital Screenings Thanks to You

Thanks to your philanthropy, preventive screening and services for breast and cervical cancer are available to at-risk patients who are uninsured or underinsured. Summa Screens and the Breast and Cervical Cancer Project are two programs that provide lifesaving screening, diagnostic testing and access to necessary care.

Healing Arts and You

With the strong support of Summa Health – and you – we have made a commitment to surround our patients, families, visitors and staff with the healing power of the arts. Our efforts support the benefits of the visual arts and music therapy, which can help lower blood pressure, reduce stress, curb anxiety and depression, and alleviate pain.

Can help lower



blood pressure, reduce stress, curb anxiety and depression, and alleviate pain

Your Support is an Investment in Excellence

Summa Health continues to build on its reputation as a destination for the highest quality, compassionate care. Awards, recognition and accreditations testify to the dedication of our nearly 8,000 employees and the powerful impact of your support.

Consider just a few of the honors we have achieved:

- **For overall performance**
Healthgrades included Summa Health in its America's 250 Best Hospitals Award™ placing the health system in the top 5 percent of more than 4,500 hospitals assessed nationwide for superior clinical performance in 2019, 2020 and 2021. Healthgrades is the leading online resource for comprehensive information about physicians and hospitals.
- **First in Ohio to be certified in thrombectomy**
Summa Health System – Akron Campus was the first hospital in the state of Ohio to be granted certification as a Thrombectomy Capable Stroke Center by the Joint Commission. This advanced stroke certification affirms the expertise of Summa Health in administering both clot-busting drugs and performing minimally invasive, life-saving acute stroke treatments. The certification marked Summa Health as a destination for stroke care in our region.
- **Among the 50 Top Cardiovascular Hospitals in the Nation**
Summa Health System – Akron Campus was named one of the nation's 50 Top Cardiovascular Hospitals by IBM Watson Health™ in 2019, 2020 and again in 2021. IBM Watson Health is a business unit of IBM dedicated to the development and implementation of cognitive and data-driven technologies to advance health. The 50 Top Cardiovascular Hospitals Award studies independent and objective research to analyze hospital and health system performance in key clinical and operational areas for selected cardiovascular procedures and medical care.
- **For safety**
Summa Health System – Barberton Campus achieved an "A" and the Akron Campus a "B" in the Leapfrog Hospital Safety Grade, a national distinction recognizing achievements in protecting patients and providing safer healthcare.



Watson Health
50 Top Cardiovascular
Hospitals 2021



Our Future Is Bright Because of You

These are exciting times. With our continuing investment in the healthcare of our community, coupled with our commitment to clinical education, research and discovery, we are enhancing our patients' experience and empowering the clinically excellent, compassionate care of our providers. As we enter the next phase of our investment, which includes a new home for the Behavioral Health Institute, we are deeply grateful for your continuing support.

Looking Ahead With You

With your support, we will continue to deliver the highest quality, compassionate care we have always delivered to our community. Through our new action plan, "Summa Stands with Our Community," we have intensified our efforts to identify, address and eliminate health disparities in our community.

Following the disproportionate effect of COVID on underserved populations and recent unrest across the country, we made a promise to not only acknowledge racism as a public health crisis but also to take swift action in addressing this topic with resources, education and tangible commitments. We are grateful for donors like you who join with us in advocating for impactful change throughout our community.



To continue your impact at Summa Health and establish a legacy for the future, visit summahealth.org/foundation or call **330.375.3159** for more information.

